

23 Wheelie Bin Stores

Instruction Manual



Visual representation of your shed, sizes may differ

23 Instruction Manual

The type and quantity of components may vary for different style stores. Assembly of all store styles is by the same method as detailed.

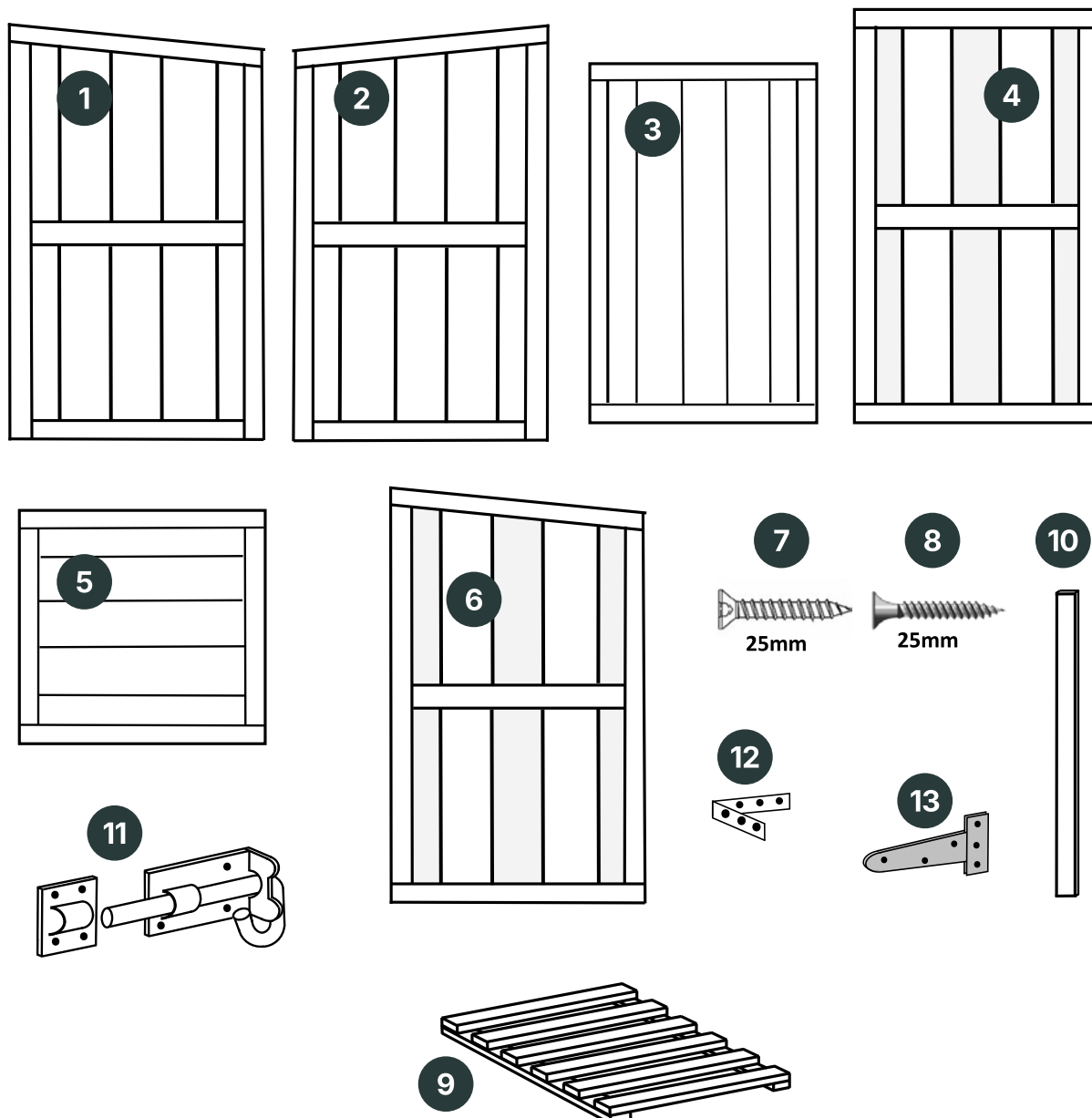
Before assembling the store, please check that all parts are present. Report any shortages or other issues immediately.

DO NOT attempt to modify the store or any of its parts as this may invalidate the warranty.

No.	Components	Number
1	Right side panel	1
2	Left side panel	1
3	Door	2
4	Rear panel	2
5	Roof panels	2
6	Divider	1
7	25mm silver screws	Various
8	25mm Black screws	various
9	Shelf	Various (optional)
10	Front support baton (28 × 42mm)	1 per opening
11	Pad bolt	1 per door
12	Corner brackets	6 per opening
13	Hinges	2 per door, 2 per lid

Timber Information.

Timber is a natural product and can therefore be subject to warping, shrinkage, splitting etc... Periods of excessive dry spells can cause the timber to lose internal moisture resulting in shrinkage on a panel. During periods of excessive wet spells, the timber may experience some swelling. Unfortunately this process cannot be avoided. If you have problems with certain boards shrinking, try to decrease the amount of direct sunlight it gets.



If you have any questions or queries during the assembly of your building please contact us:



Helpline: 01384 897257

Opening hours: Monday – Friday 9am – 4.30pm

We are constantly improving and updating the quality of our products and as such some components may differ from those shown. We reserve the right to change the specification of our products without prior notice.

Assembly Instructions



10mm

Step 1.

Lay both back panels on the floor as shown above, and attach one hinge at each side overhanging the sides of the back panel by 10mm

Step 2.

Turn over the back panel and attach a corner bracket to each of the 4 corners as shown in these two pictures.





Step 3.

Attach one of the side panes to one of the back panels with the corner brackets using the silver 25mm screws.

Ensure that the back panel is flush with the side panel as detailed below.



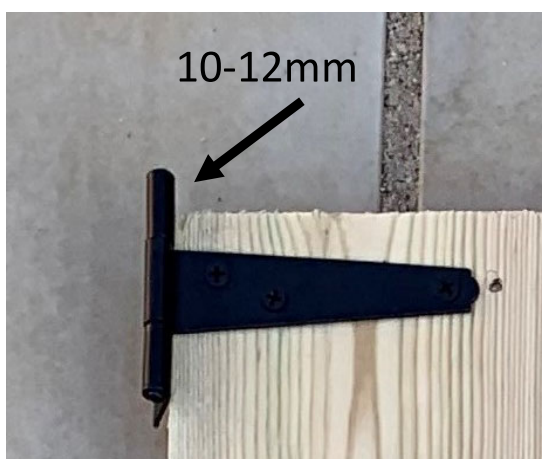
Assembly Instructions



Step 4.

Attach the divider panel using the same method and then add the next back panel and the other side panel.





Step 5.

Lay the doors flat and add the hinges and padbolts as above.

Make sure that each hinge overhangs the top or bottom of the door by 10-12mm

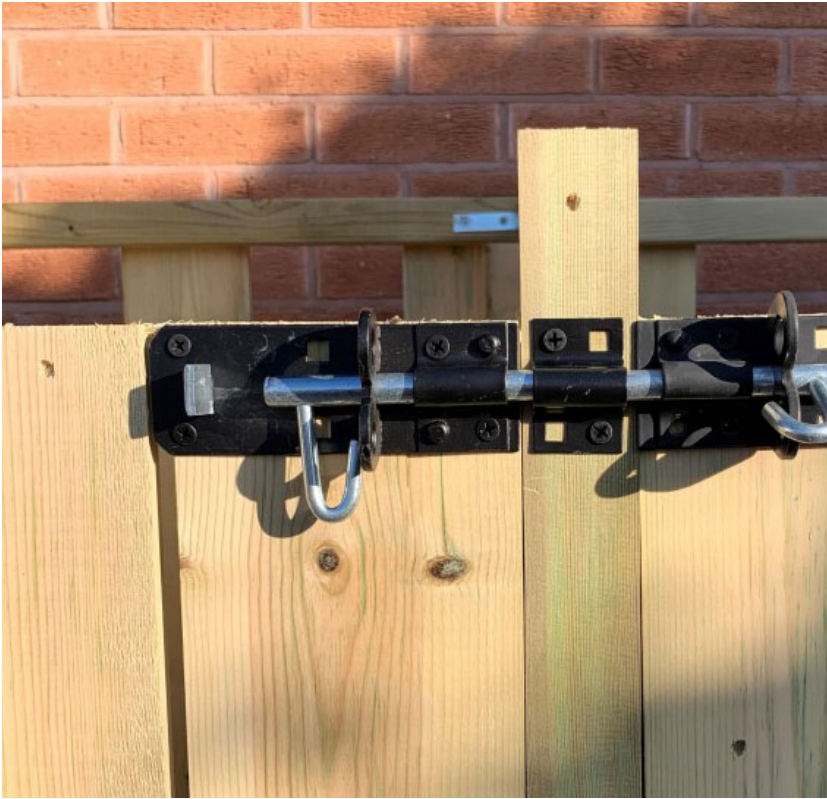
Step 6.

Hang the doors onto the sides of the store, equally spacing the hinges from the top and bottom.

6. Further Treatment

It is generally recommended to allow 30 days before painting or staining pressure treated timber. If the timber is not sufficiently dry, it can cause shrinkage and mould issues in the future.

Assembly Instructions



Step 7.

Fit the one of the pad bolt keeps to the centre divider panel, making sure that both bolts are in line.



Step 8.

Now attach the front spacer baton above the doors, using 2 corner brackets and silver screws for each one.



Step 9.

Fit the bin store lids by screwing the hinges that are on the back panels to the rear framing of the roof panels. The thinner scalloped edge of the roof should be at the back.



Step 10.

Finally, attach the chain to the lids using the hooks. The hooks should be fitted roughly one third of the way from the back of the roof. Check and adjust the length of the chain so that it allows the roof to open and close properly.



If you have any questions or queries during the assembly of your building please contact us:



Helpline: 01384 897257

Opening hours: Monday – Friday 9am – 4.30pm



Scan the QR code above or visit

www.empiresheds.co.uk